

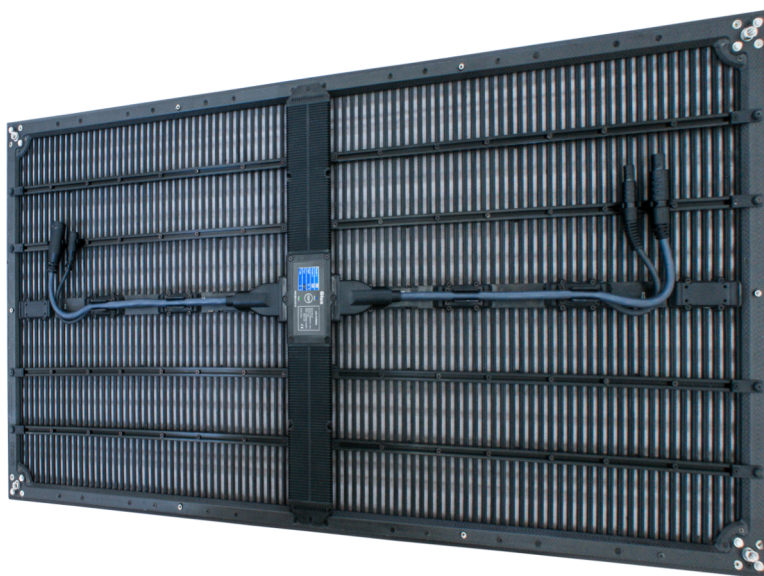
Technical Support Limited

www.starcloth.co.uk

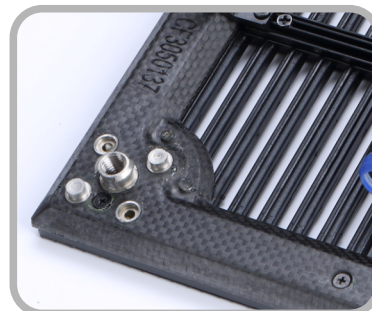
Visual Effects Expert

Glux visual products

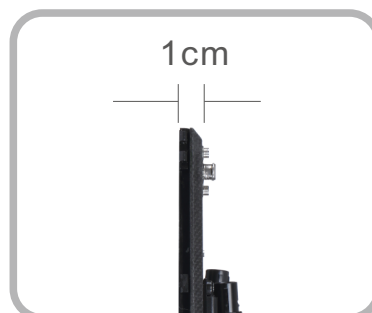
BAtn Series



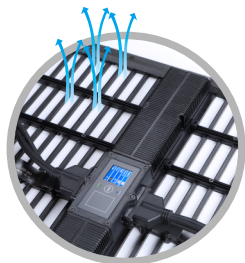
↙ The quality is in the details
Using future technology, today.



◆ Carbon fiber construction



◆ Ultra-thin design & lightweight
Only 10kg/sqm



High Transparency



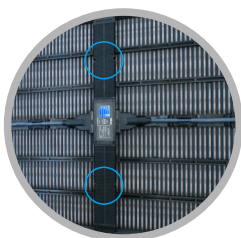
Usage Status Display



Test Button



ODU Connector &
LAPP Cable (made in
Germany)



Dual Power Supply
System



45 Degree Curved Frame
Suitable for 90 Degree
Installation



◆ Modular design for
convenient maintenance

Office 504, Block A4, OCT Eastern Industrial Zone, Nan Shan District,
Shenzhen 518034, P.R. China
Tel: +86 - 755 - 88866999 86096113
Fax: +86-755-86241789

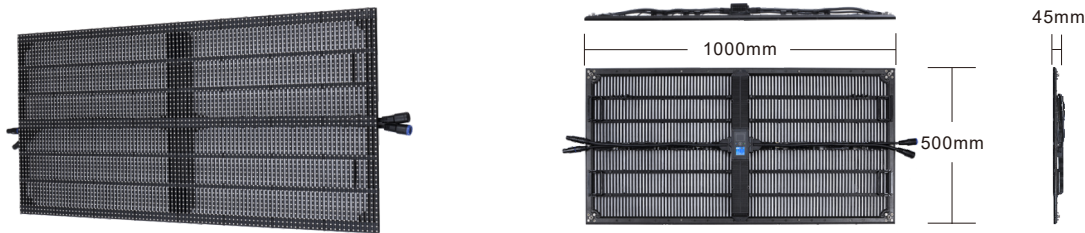


FC CE cULus RoHS

BAtn Series New

High transparency Outdoor LED Display

- ◆ SMD 3in1 LEDs, transparency Outdoor LED Display
- ◆ High transparency, Low Wind-resistance, High brightness, High protection
- ◆ Carbon Fiber frame for super thin and lightweight style with ultra-high strength tensile force, high mechanical stability
- ◆ Easy, quick and flexible installation for fast assembly and maintenance, suitable for different applications
- ◆ Dot by dot calibration guarantee image uniformity
- ◆ Perfect inclined frame structure for curved and 90degree assembly



Glux LED Display BAtn series				
Parameter \ Type	BAtn6	BAtn10	BAtn15	
Pixel Pitch (mm)	6.9	10.6	15.6	
Pixel Density (dots/m ²)	20734	9216	4096	
Brightness Max (cd/m ²)	≥5000	≥5000	≥5000	
Grey Scale (bit)	16bit	16bit	16bit	
Refresh Rate (Hz)	≥1000	≥1000	≥1000	
Frame Rate (Hz)	50/60	50/60	50/60	
Contrast	2000:1	2000:1	2000:1	
Color Temperature (after calibration) (K)	6500	6500	6500	
Horizontal / Vertical Viewing Angle (°)	H160/V160	H160/V160	H160/V160	
Module Size (W x H x D) (mm)	500x500x60	1000x500x45	1000x500x45	
Weight (kg/panel)	≤4	≤4	≤4	
Protection	IP65	IP65	IP65	
Power Supply	Dual power supply	Dual power supply	Dual power supply	
Working Voltage(V)	AC110-240V/50/60Hz	AC110-240V/50/60Hz	AC110-240V/50/60Hz	
Max Power Consumption (W/pcs)	≤300	≤300	≤300	
Working Temperature	-25C°/50C°	-25C°/50C°	-25C°/50C°	
Cabinet Material	Carbon fiber	Carbon fiber	Carbon fiber	
Max Hanging (vertical)	≥1000kg	≥1000kg	≥1000kg	
Signal Cable	CAT5-1000M	CAT5-1000M	CAT5-1000M	
Video Signal Input Interface	DVI/HDMI/HDSDI	DVI/HDMI/HDSDI	DVI/HDMI/HDSDI	
Life Time (h)	≥75000	≥75000	≥75000	