

Flame Effects



The S+H range of flame effects neither hides its quality nor shouts about it. These designs to enhance set and stage are understated yet have an air of quality to which clientele have become accustomed.

Our flamelight effects create a realistic yet totally safe flame effect, mounted on a high quality base or stand. Stand finishes range from black powder coated bases to highly polished steel plinths. Flame heights vary from 380mm to 1200mm.

Fibre-Optic Effects

The Shemmira fibre optic effect consists of 110 cracked fibres located into a circle approximately 1.5m diameter. Once connected to a colour change light source the fibres can be set to scroll through a range of colours or set to a static single colour. For ultimate control a DMX controlled light source provides optimum flexibility.

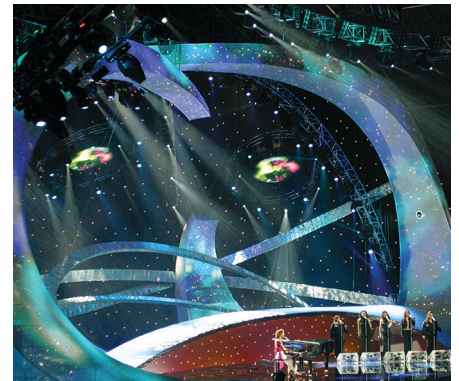
...Understated, but have
an Air of Quality...



Other Products



- Pealight Starcloth
- Led Starcloth (ShowLED & In-House)
- Animated Starcloth (ShowLED)
- LED Video Floor
- LED Video Screens
- Drapes
- Starcloth Tables
- Flame Effects
- Fibre-Optic Effects
- Pealight Canopy
- Pealight Strings
- Stock/Custom Signs & Logos
- Tab Tracks
- Electric Kabukis
- DJ & Production Booths
- Lighting Installations
- Custom Set Enhancements



Hype Party Planning

Have you tried
Everything **S+H** have
to offer?

Authorised UK Distributors for:

SHOWLED
creative LED solutions

ALAVES PROCLICK®